

Article

Distal [FeS]-Cluster Coordination in [NiFe]-Hydrogenase Facilitates Intermolecular Electron Transfer

Alexander Petrenko¹ and Matthias Stein^{1*}

¹ Max Planck Institute for Dynamics of Complex Technical Systems, Molecular Simulations and Design Group, Sandtorstrasse 1, 39106 Magdeburg, Germany.

* Correspondence: matthias.stein@mpi-magdeburg.mpg.de Tel.: +49-391-6110436

Abstract: Biohydrogen is a versatile energy carrier for the generation of electric energy from renewable sources. Hydrogenases can be used in enzymatic fuel cells to oxidize dihydrogen. The rate of electron transfer (ET) at the anodic side between the [NiFe]-hydrogenase enzyme distal iron-sulfur cluster and the electrode surface can be described by the Marcus equation. All parameters for the Marcus equation are accessible from DFT calculations. The distal cubane FeS-cluster has a three cysteine and one histidine coordination [Fe₄S₄](His)(Cys)₃ first ligation sphere. The reorganization energy (inner- and outer-sphere) is almost unchanged upon a histidine-to-cysteine substitution. Differences in rates of electron transfer between the wild-type enzyme and the all-cysteine mutant can be rationalized by a diminished electronic coupling between the donor and acceptor molecules in the [Fe₄S₄](Cys)₄ case. The fast and efficient electron transfer from the distal iron-sulfur cluster is realized by a fine-tuned protein environment which facilitates the flow of electrons. This study enables the design and control of electron transfer rates and pathways by protein engineering.

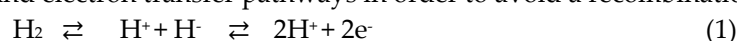
Keywords: electron transfer; Marcus equation; enzymatic fuel cell; hydrogen oxidation; electrode adsorption; DFT; bioelectrochemistry.

1. Introduction

Hydrogen is one of the future energy carriers [1]. It can be used to produce higher energy-rich biofuels or directly for combustion in a turbine or used in a fuel cell. Low-cost, low carbon (e.g. CO₂ emitting) hydrogen production can be realized from electrolytic production of dihydrogen using sustainable sources of electricity or from water splitting using sunlight by artificial photosynthesis. In the longer term, vehicle driving can be obtained from electricity, hydrogen or a combination of both in a fuel cell.

Microbial fuel cells (MFCs) are bio-electrochemical converters of microbial reducing power (generated by the metabolism of substrate), into an electric current by making use of enzymes. Only membrane-less biological fuel cells (FCs) make use of direct electron transfer (DET) reactions to the anode and from the cathode.

Uptake [NiFe] hydrogenase enzymes, which catalyze the reversible oxidation of H₂, require a fast separation of proton and electron transfer pathways in order to avoid a recombination reaction



While the involvement of a glutamate residue in proximity to one of the terminal cysteine residues has been established as a gateway for proton transfer, see [2] for recent spectroscopic and [3] for structural evidence, the routes for electron transfer are less studied. The arrangement of three FeS-cluster in the small subunit, however, suggests the flow of electrons along these metallic cofactors (see Figure 1). The electron transfer path of the [NiFe]-hydrogenase in the small subunit is made up

of aligned iron-sulfur clusters, the proximal [4Fe-4S]-, the medial [3Fe-4S]-, and the distal [4Fe-4S]-cluster which can be characterized by protein film voltammetry, see [4,5] for review articles.

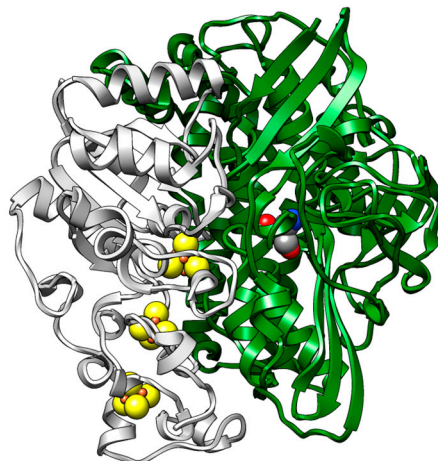


Figure 1. Spatial arrangement of metallic cofactors in [NiFe]-hydrogenase enzyme. The active site is in large subunit (green) a chain of FeS-clusters is harbored in the small subunit (grey).

The distal [4Fe4S]_a has an unusual three cysteine and one histidine coordination, a motif that also occurs in other redox active enzymes such as nitrate reductases and ubiquinone oxidoreductases.

The fast and efficient electron transfer to an electrode surface points to a highly engineered protein environment that modulates both catalysis and proton and electron transfer. We have previously used Brownian Dynamics (BD) simulations to sample the hydrogenase orientation on a graphite electrode surface [5,6]. Residues Ser196, Glu461 and Glu464 were found to establish contacts between the *D. fructosovorans* [NiFe]-hydrogenase and graphite surface. Different electron transfer routes connecting the distal FeS-cluster and the graphite electrode were investigated quantum mechanically. Only one suggested electron transfer pathway a.o. Phe193 to residue Ser196 was found to yield electron transfer rates in excellent agreement with experiments.

We here extend this approach to investigating the effect of a histidine to cysteine backmutation in the distal FeS-cluster to recover a standard four cysteine [Fe₄S₄]-cubane coordination and show its effect on electron transfer rates. Substitution of a His to Cys does not drastically change the reorganization energy of the distal FeS-cluster. Rather, the electronic coupling matrix of the Marcus equation is diminished due to a reduced atomic overlap. This affects the electron transfer rates and reduces them by about three orders of magnitude which is in excellent agreement with experiment.

2. Results and Discussion

The nickel-iron hydrogenase absorbs directly on a graphite electrode [6] and also on carbon-nanotube-coated pyrolytic graphite electrodes [7] to, here, catalyze the consumption of H₂ (see Figure 2). When adsorbed on an electrode, the hydrogenase enzyme produces high catalytic current and occurs at potentials expected for this half-cell reaction [2]. Turn-over-frequencies (TOFs) of up to 50.000 s⁻¹ have been measured on electrodes.

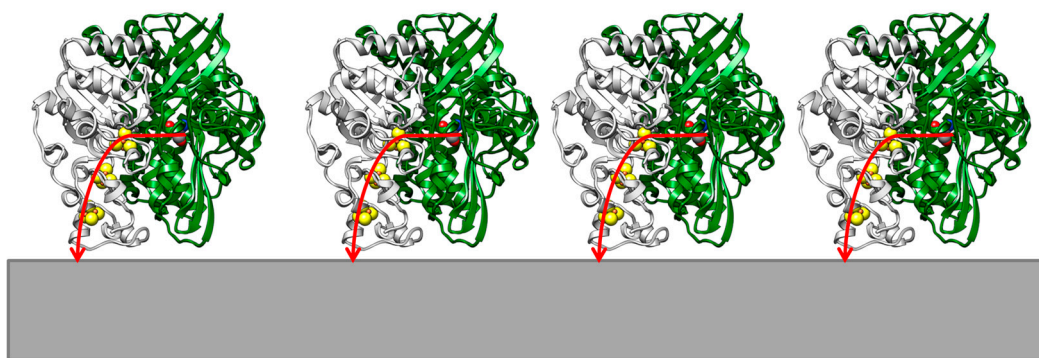


Figure 2. Schematic display of the orientation of hydrogenase enzyme on a graphite electrode. The flow of electrons from the active site, via the FeS-clusters to the graphite electrode is indicated.

The activity of the adsorbed enzyme is greater than the catalytic activity with electron acceptors and donors [6]. This demonstrates that both the reaction with H_2 and electron transfer are very efficient and do not require any overpotential as excessive driving force. The catalytic rate is thus only diffusion-controlled by H_2 approach to the active site [8].

In absence of an overpotential, the Marcus equation for electron transfer applies. In the high temperature limit, the rate constant for long distance electron transfer from a donor to an acceptor is given by the Marcus equation:

$$k_{ET} = \frac{2\pi}{\hbar} |V_{DA}|^2 \frac{1}{\sqrt{4\pi\lambda k_B T}} \exp\left[-\frac{(\Delta G^0 + \lambda)^2}{4\pi\lambda k_B T}\right] \quad (2)$$

where \hbar is the reduced Planck constant, k_B the Boltzmann constant and T the temperature. The rate is then determined by the electronic coupling matrix element (V_{DA}), the overall Gibbs free energy change of the ET reaction (ΔG^0) and the reorganization energy (λ) needed by the system to adapt to its new state after electron transfer.

We used the Linderberg type formula for electron transfer to calculate the electronic coupling matrix between interacting donor and acceptor molecules

$$V_{DA} = \frac{1}{Z} \frac{\partial S}{\partial Z} \quad (3)$$

where Z is the distance between the centers of gravity of the electron clouds representing the distribution of the transferring electron in the initial and in the final states. S is the electronic overlap integral of the wave functions of electron in its initial (Ψ_a) and final (Ψ_b) states:

$$S = \iiint \Psi_a(r) \Psi_b(r) dx dy dz \quad (4)$$

The wave functions of the electron in its initial (ψ_a) and final (ψ_b) states are given as linear combinations of Gaussian basis functions.

The reorganization energy λ in the Marcus equation describes the need of the system to adapt to its new electronic state after ET. The reorganization energy has two components, the internal (λ_i) and solvent (λ_s) reorganization energy:

$$\lambda = \lambda_i + \lambda_s \quad (5)$$

The internal reorganization energies λ_i were computed using separate fragments by means of the Nelsen four point method [9]

$$\lambda_i = E(D^+ | D) - E(D^+ | D^+) + E(A^- | A) - E(A^- | A^-) \quad (6)$$

where $E(D^+ | D)$ denotes the total energy of a donor molecule in its oxidized state at the geometry of reduced state, $E(D^+ | D^+)$ denotes the total energy of a donor molecule in its oxidized state at the geometry of oxidized state, $E(A^- | A)$ denotes the total energy of the acceptor molecule in its reduced

state at the geometry of oxidized state, $E(D^+ | D^+)$ denotes the total energy of the acceptor molecule in its reduced state at the geometry of reduced state.

Table 1 give the calculated inner sphere reorganization energies of clusters models of the distal $[\text{Fe}_4\text{S}_4](\text{His})(\text{Cys})_3^{2/-1}$ and substituted four cysteine coordinated $[\text{Fe}_4\text{S}_4](\text{Cys})_4^{-3/-2}$. Histidine coordination does not significantly influence the reorganization energy and the calculated values agree with those from Sigfridsson et al. who also used the B3LYP exchange-correlation functional with a slightly enhanced DZP basis set [10]. According to these results, the reorganization energy is not a major factor between histidine- and cysteine-coordinated cubanoid FeS-clusters.

The experimental feasibility of changing the first ligand coordination sphere of the distal [FeS]-cluster was demonstrated. Dementin et al. [11] have shown that protein cluster assembly, protein stability as well as active site catalytic function are not affected by histidine to cysteine or glycine mutations directly coordinating the distal [FeS]_d-cluster. Intramolecular ET, however, was impaired by the H184G and intermolecular ET by the H184C mutant.

Table 1: Calculated inner-sphere reorganization energies for distal [FeS]-cluster models

Distal FeS-Cluster Model	Redox state	λ_i [eV]
$[[\text{Fe}_4\text{S}_4](\text{Cys})_3(\text{His})]^{2/-1}$	ox	0.18
	red	0.32
$[[\text{Fe}_4\text{S}_4](\text{Cys})_4]^{-3/-2}$	ox	0.19 [10]
	red	0.30 [10]

The solvent reorganization energy λ_s was calculated following the procedure described in [12] where λ_s is obtained as the energy difference between the calculated internal λ_i values of the solvated molecular system calculated (in the framework of dielectric continuum solvation model) in two continuum solvents, one (λ') corresponding the four point method calculation using the static dielectric constant of solvent and the other (λ'') using the optical dielectric constant of the solvent:

$$\lambda_s = \lambda' - \lambda'' \quad (7)$$

In addition to the inner sphere reorganization energy, the solvent reorganization energy has to be considered additionally. Table 2 gives total internal reorganization energies when solvent effects are incorporated.

Table 2: Calculated outer-sphere solvent reorganization energies λ_s for electron donor and acceptor models in a COSMO ($\epsilon = 78$) dielectric (in eV)

		Redox state	λ_s [eV]
Donor [FeS] _d -Cluster Model	$[[\text{Fe}_4\text{S}_4](\text{Cys})_3(\text{His})]^{2/-1}$	ox/red	0.38/0.18
	$[[\text{Fe}_4\text{S}_4](\text{Cys})_4]^{-3/-2}$	ox/red	0.30/0.19
Acceptor PG Model	Coronene $\text{C}_{24}\text{H}_{12}^{-1/0}$	ox/red	0.09/0.07

Effects of the environment on the reorganization energy can be approximated by COSMO calculations of the donor and acceptor models, respectively.

Electron transfer from an iron-sulfur cluster model to a neutral coronene acceptor is associated with an internal reorganization energy of 0.45 eV *in vacuo* and 0.51 eV when solvent effects are incorporated. This is in agreement with the calculated outer-sphere reorganization energy for the electron transfer between two iron-sulfur cubane $[\text{Fe}_4\text{S}_4]$ clusters in ferredoxin [13] and we can thus transfer the calculated reorganization energies from His to Cys coordinated clusters.

We have previously shown that the overlap integrals, the electronic coupling matrix V_{DA} and the resulting rates of electron transfer k_{ET} are almost independent of the spatial extension of the acceptor model (coronene $\text{C}_{24}\text{H}_{12}$ *vs.* circumcoronene $\text{C}_{54}\text{H}_{18}$) and also the relative orientation of the donor (basal *vs.* edge) [14]. For reasons of computational efficiency we have here thus chosen a basal orientation of the coronene with respect to the distal [FeS]-cluster models (see Figure 3).

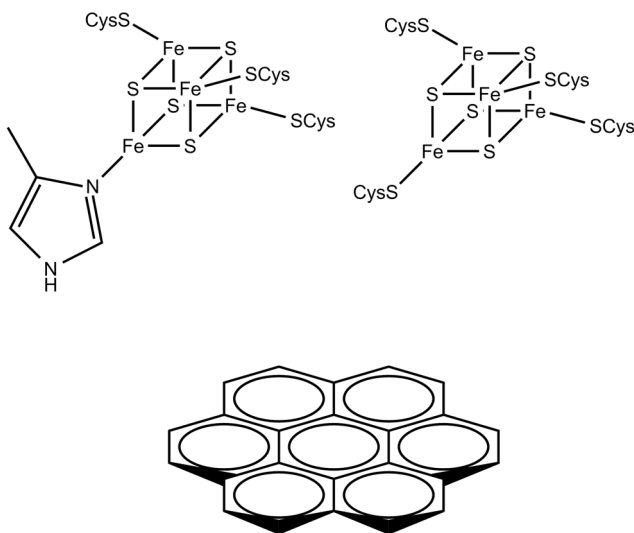


Figure 3. Small cluster models for direct electron transfer from the [FeS]₄-cluster to a graphite surface model.

For [NiFe]-hydrogenase absorbed on a graphite electrode, direct interfacial electron transfer is fast and independent to the presence or absence of a mediator [15]. This indicates (i) a direct contact between enzyme and electrode surface so that mediator molecules cannot interfere with electron transfer, (ii) the distal iron-sulfur cluster [FeS]₄ in close proximity to the electron acceptor and (iii) a uniform distribution of enzymes on the electrode surface (see Figure 2). When using an artificial soluble electron acceptor (methyl viologen) the measured rates of electron transfer are even slower than those of electrode associated [NiFe]-hydrogenases [16].

When we calculate the rates of direct electron transfer k_{ET} for small cluster models (see Figure 3) using the Marcus equation (2), parameters and integrals defined in equations for V_{DA} (3), overlap integrals S (4) and reorganization energy λ (5), we see a striking difference in histidine- *vs.* cysteine-coordinated distal FeS-clusters (see Table 3).

Table 3. Calculated DET rates from the distal iron-sulfur cluster to a graphite electrode surface. Distances from distal iron-sulfur cluster to graphite surface (Z), overlap integrals of donor and acceptor orbitals (S), electronic coupling matrices (V_{DA}), and calculated rates of ET (k_{ET}).

Distal FeS-Cluster Model	Z [Å]	S	V_{DA} [cm ⁻¹]	k_{ET} [s ⁻¹]
[Fe ₄ S ₄](Cys) ₃ (His)	12.3	5.3×10^{-6}	4.4×10^{-2}	5.1×10^3
[Fe ₄ S ₄](Cys) ₄	12.3	1.1×10^{-7}	1.5×10^{-3}	6.0

The calculated rate of electron transfer from the histidine-coordinated distal [FeS]₄-cluster using the Marcus equation of 5100 s⁻¹ is in good agreement with experimental results from Dementin *et al.* [17] (1050 – 3100 s⁻¹) and Pershad *et al.* [6] (1500 – 9000 s⁻¹). When the coordinating histidine is replaced by a cysteine residue the electron transfer slows down by orders of magnitude (to 6.0 s⁻¹) due to a significant decrease of electronic coupling between the iron-sulfur cluster and the electrode (see Table 3). Due to the quadratic dependence of electron transfer rate constants on the electronic coupling in the Marcus equation, the ET rate constants differ from 6 to 5100 s⁻¹.

Brownian Dynamics simulations have been used to efficiently sample the protein orientation at the graphite surface and identify amino acid residues which mediate the flow of electrons from the distal [FeS]-cluster to the electrode. Terminal residues Ser196, Glu461 and Glu464 were shown to approach the surface. But only the pathway from [FeS]₄ to the alpha-helical terminus residue Ser196 gave ET rates in good agreement with experiment [14]. Routes leading to Glu461 and Glu464 could be ruled out due to rates of ET orders of magnitude deviating from experiment. The ET is equally efficient via a through-bond (mediated by the peptide main chain) or a through-space ET (mediated by the amino acid side chains) path (2.2 *vs.* 5.8×10^3 s⁻¹).

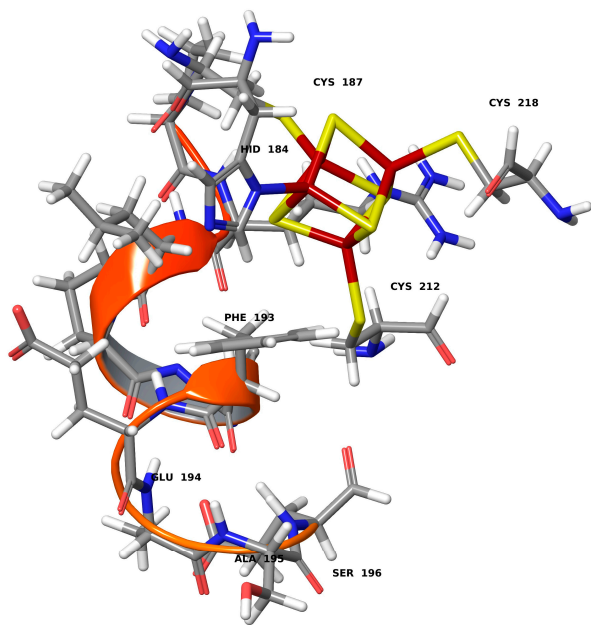


Figure 4. Large structural model for protein-mediated electron transfer from the [FeS]₄-cluster via Ser196 to an electrode.

Table 4 gives the calculated electron transfer rates from the distal [FeS]₄-cluster in either a histidine or an all-cysteine coordination sphere via amino acid residues along the preferred route D¹⁸⁵-S¹⁹⁶ (Asp185, Asn186, Cys187, Pro188, Arg189, Leu190, Pro191, His192, Phe193, Glu194, Ala195, Ser196) (see Figure 4). This is the shortest path connecting the distal FeS-cluster with the electrode approaching Ser196 residue (via a short α -helical stretch from residues 185-194).

Table 4. Calculated through-space electron transfer rates from the distal iron-sulfur cluster to a graphite electrode surface. Distances from distal iron-sulfur cluster to graphite surface (*Z*), overlap integrals of donor and acceptor frontier orbitals (*S*), electronic coupling matrices (*V_{DA}*), and calculated rates of ET (*k_{ET}*).

Distal FeS-Cluster Model	<i>Z</i> [Å]	<i>S</i>	<i>V_{DA}</i> [cm ⁻¹]	<i>k_{ET}</i> [s ⁻¹]	Exp. [s ⁻¹] [17]
[Fe ₄ S ₄](Cys) ₃ (His)	15.3	8.2 × 10 ⁻⁶	2.9 × 10 ⁻²	2.2 × 10 ³	1 - 3.5 × 10 ³
[Fe ₄ S ₄](Cys) ₄	15.3	2.9 × 10 ⁻⁶	1.1 × 10 ⁻²	3.6 × 10 ²	> 40

Electrochemical investigation of the WT and an all-cysteine coordinated hydrogenase mutant gave significantly reduced rates of electron transfer from the distal [FeS]₄-cluster to the electrode [18]. Our calculated value of 360 s⁻¹ is in excellent agreement with the experimental the results of > 40 s⁻¹.

In general, the DET rates from the distal [FeS]-cluster to the electron acceptor slightly deviate from the measured rates of electron transfer. Calculated values of 5100 s⁻¹ and 6 s⁻¹ compare well with experimental results of 1050-3500 s⁻¹ and 40 s⁻¹, respectively. The reproduction of such a subtle experimental effect from sole quantum chemical calculations alone is very encouraging. The slight deviation can be rationalized by the complete neglect of the protein environment. When the electron transfer route via amino acid residues from the [FeS]₄-cluster to the terminal residue is explicitly incorporated, the calculated rates of electron transfer of 2200 s⁻¹ and 360 s⁻¹ are in perfect agreement with experiment.

From our calculations we can thus estimate the effect of the highly sophisticated protein environment for electron transfer from the distal [FeS]-cluster to an electron acceptor (cytochrome or electrode) by comparing Tables 2 and 3. The first ligation sphere (histidine *vs.* cysteine) is responsible for the dominating effect on ET rates. The reorganization energy for a [Fe₄S₄](Cys)₄ cubane cluster, however, is almost indistinguishable from that of the distal cluster [Fe₄S₄](His)(Cys)₃ coordination. Clearly, it is not the reorganization energy that is causing the difference in ET rates.

The different electronic coupling between the amino acid histidine with its π -electrons and the aromatic amino acid phenylalanine Phe193 in close spatial contact facilitate a swift through-space transfer of electrons (see Figure 4). Such an interaction is absent in an all-cysteine coordinated distal cubane cluster. The electron transfer rate along the amino acids connecting the distal [FeS]-cluster of hydrogenase with its electron acceptor is equally fast and facile as the DET. The rates k_{ET} only marginally change which shows an efficient protein-mediated electron transfer pathway. The protein environment of the distal cluster is then not only a protectant of the redox active transition metal cluster but also a highly evolved electron transfer path maintaining an efficient ET.

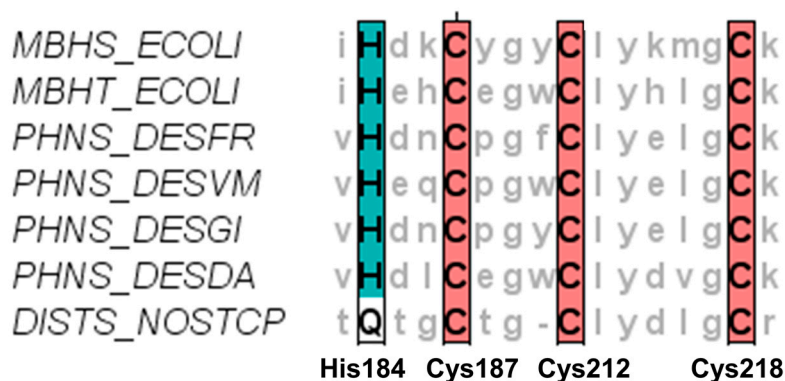


Figure 5. First shell amino acid coordination sphere of the distal FeS-cluster of the small subunit of [NiFe]-hydrogenases: MBHS_ECOLI (hydrogenase-1; *hyaA*; *E. coli*), MBHT_ECOLI (hydrogenase-2; *hybO*; *E. coli*), PHNS_DSEFR (periplasmic [NiFe] hydrogenase small subunit; *hydA*; *D. fructosovorans*), PHNS_DESVM (periplasmic [NiFe] hydrogenase small subunit; *hydA*; *D. vulgaris*), PHNS_DESGI (periplasmic [NiFe] hydrogenase small subunit; *hydA*; *D. gigas*), PHNS_DESDA (periplasmic [NiFe] hydrogenase small subunit; *hydA*; *D. desulfuricans*), DIST_NOSTCP (Ni,Fe-hydrogenase I small subunit; Nos7524_1174; *Nostoc sp.*).

Sequence analysis of amino acid residues in the first coordination sphere of the distal [FeS]-cluster of a representative subset of [NiFe]-hydrogenases is given in Figure 5. All hydrogen oxidizing [NiFe]-hydrogenases from membrane-bound *E. coli* or periplasmic hydrogenases from *D. fructosovorans*, *D. vulgaris*, *D. gigas* and *D. desulfuricans* display the characteristic His184, Cys187, Cys212 and Cys218 coordination (in *D. fructosovorans* amino acid numbering). They are thus expected to possess identical reorganization energies λ and similar direct electron transfer rates from the distal the [FeS]_a-cluster to a graphite electrode surface. Only differences in amino acid residues spatially connecting [FeS]_a and the electrode could slightly modulate the protein-mediated ET rates. The distal [FeS]-cluster of the cyanobacterial uptake [NiFe]-hydrogenase from *Nostoc sp.* [19] (strain ATCC 29411 / PCC 7524) and other cyanobacterial hydrogenases [20], however, are missing the bacterial histidine coordination and possess a glutamine at that position. Raleiras *et al.* have characterized the iron-sulfur clusters of *Nostoc punctiforme* using EPR spectroscopy [19]. From a characteristic EPR signature, they concluded the presence of a fully assembled, intact distal [Fe₄S₄]-cubane cluster with a His to Gln coordination but could not rationalize the effect of this mutation on redox potentials and ET rates. According to our results, we expect a significant effect of the glutamine coordination to the distal [FeS]-cluster on ET rates. When glutamine coordinates the distal FeS-cluster as a deprotonated glutamate, the absence of a π -electron system and the similarity of the amino acid side-chain size and charge to a cysteine lead us to hypothesize on an absent or significantly reduced ET from the distal FeS-cluster to an electron acceptor. In the uptake hydrogenase from *Nostoc punctiforme*, it was even possible to engineer a reverse electron flow by modifying the proximal FeS-cluster. The engineered enzyme was able to take up electrons via the distal [4Fe-4S] cluster and transfer them to the [NiFe]-centre [21]. This is clearly also associated with the glutamine to histidine modified [FeS]_a-cluster motif.

4. Materials and Methods

The protein crystal structure of the [NiFe]-hydrogenase from *D. fructosovorans* (pdb entry 1YWQ) was used. All calculations were performed using Turbomole v6.6 [22,23]. The hybrid B3LYP [24-26] exchange correlation functional was used with a TZVP basis set [27]. This combination was already shown to give ET parameters in good agreement with experiment. It was shown that B3LYP and PBE0 functionals give an identical ordering of spin states in cubanoid iron-sulfur clusters and identical assignment of oxidation states for each metal atom [28].

The calculations were carried out at the spin-unrestricted density functional theory level. Molecular orbitals were obtained from single-point energy calculations at the optimized structures. The matrix of overlap integrals of contracted atomic Gaussian basis functions was printed in separate supramolecular calculations of the donor plus the acceptor using the \$intsdebug option of TURBOMOLE. MOs and overlap matrices S_{mm} used in subsequent calculations of S and V_{DA} were calculated using an in-house developed code.

The reorganization energy was computed for separate donor models of the distal iron-sulfur cluster and coronene and circumcoronene as electron acceptors. All calculations for λ were structural optimizations on individual cluster models of the iron-sulfur cluster and coronene/circumcoronene as acceptor in different redox states. The oxidized iron-sulfur cluster is a diamagnetic, EPR-silent $S = 2$ spin state of a $[4\text{Fe-4S}]^0$ core made up of 2 Fe(II) and 2 Fe(III) atoms. The reduced form is a paramagnetic $S=1/2$ spin state with a $[4\text{Fe-4S}]^+$ core (3 Fe(II) and 1 Fe(III) atom). The redox states of the iron-sulfur clusters were elucidated by redox titrations and EPR monitoring [29].

Differences in reorganization energies between oxidized and reduced states originate from parabolic diabatic curves with different curvatures, for a discussion see for example [30].

Optimizations were performed *in vacuo* as well as in solution using the conductor-like screening model (COSMO [31]) to allow discriminating between internal and solvent reorganization energies (see above). Rates of electron transfer were calculated using the Marcus equation between an anti-ferromagnetically coupled $S=1/2$ distal FeS-cluster model and a graphite electron acceptor model (see above).

5. Conclusions

[NiFe]-hydrogenase enzymes provide spatially separate pathways for proton and electron transfer when oxidizing molecular hydrogen. The large subunit which also harbors the active site is responsible for disposal of product protons along a conserved glutamate residue. The generated electrons flow along a chain of FeS-clusters in the small subunit towards the electron acceptor either a cytochrome or an electrode surface. The rate of electron transfer from the distal FeS-cluster to an anode in an enzymatic fuel cell is mediated by a non-standard (His)(Cys)₃ coordination. The calculated rates of electron transfer by use of the Marcus equation are in excellent agreement with experiment. A histidine to cysteine mutation in the first coordination sphere reduces the rate of electron transfer by three orders of magnitude. Since the reorganization energy is unchanged, the difference in k_{ET} is resulting from a change in electronic donor-acceptor coupling. The insight gained into this electronic coupling between amino acid sidechain properties and electron transfer rates allows subsequent protein engineering to carefully modulate rates and routes of electron transfer from an enzyme to an electrode in order to produce electric energy from dihydrogen.

Acknowledgments: We thank the Max Planck Society for the Advancement of Science (MPG), the Excellence Initiative "Research Center for Dynamic Systems: Biosystems Engineering" of the Federal State of Saxony-Anhalt and the European Fund for Regional Development for financial support. Part of this work was also supported by the EU COST Action CM1305 ECOSTBio (Explicit Control Over Spin-states in Technology and Biochemistry). We thank the Max Planck Computing and Data Facility (MPCDF) for providing computing resources.

Author Contributions: A.P. and M.S. conceived and designed the experiments; A.P. performed the experiments; A.P. and M.S. analyzed the data; M.S. wrote the paper.

Conflicts of Interest: The authors declare no conflict of interest.

References

1. Armstrong, R.C.; Wolfram, C.; de Jong, K.P.; Gross, R.; Lewis, N.S.; Boardman, B.; Ragauskas, A.J.; Ehrhardt-Martinez, K.; Crabtree, G.; Ramana, M.V. The Frontiers of Energy. *Nature Energy* **2016**, *1*, 15020.
2. Jones, A.K.; Sillery, E.; Albracht, S.P.J.; Armstrong, F.A. Direct Comparison of the Electrocatalytic Oxidation of Hydrogen by an Enzyme and a Platinum Catalyst. *Chemical Communications* **2002**, 866-867.
3. Ogata, H.; Nishikawa, K.; Lubitz, W. Hydrogens Detected by Subatomic Resolution Protein Crystallography in a Nife Hydrogenase. *Nature* **2015**, *520*, 571-+.
4. Armstrong, F.A.; Evans, R.M.; Hexter, S.V.; Murphy, B.J.; Roessler, M.M.; Wulff, P. Guiding Principles of Hydrogenase Catalysis Instigated and Clarified by Protein Film Electrochemistry. *Accounts of Chemical Research* **2016**, *49*, 884-892.
5. Vincent, K.A.; Parkin, A.; Armstrong, F.A. Investigating and Exploiting the Electrocatalytic Properties of Hydrogenases. *Chemical Reviews* **2007**, *107*, 4366-4413.
6. Pershad, H.R.; Duff, J.L.C.; Heering, H.A.; Duin, E.C.; Albracht, S.P.J.; Armstrong, F.A. Catalytic Electron Transport in Chromatium Vinosum Nife -Hydrogenase: Application of Voltammetry in Detecting Redox-Active Centers and Establishing That Hydrogen Oxidation Is Very Fast Even at Potentials Close to the Reversible H⁺/H₂ Value. *Biochemistry* **1999**, *38*, 8992-8999.
7. Lojou, E.; Luo, X.; Brugna, M.; Candoni, N.; Dementin, S.; Giudici-Orticoni, M.T. Biocatalysts for Fuel Cells: Efficient Hydrogenase Orientation for H₂ Oxidation at Electrodes Modified with Carbon Nanotubes. *J Biol Inorg Chem* **2008**, *13*, 1157-1167.
8. Cammack, R. Hydrogenases and Their Activities. In *Hydrogen as a Fuel*, CRC Press: 2001.
9. Nelsen, S.F.; Blackstock, S.C.; Kim, Y. Estimation of Inner Shell Marcus Terms for Amino Nitrogen-Compounds by Molecular-Orbital Calculations. *Journal of the American Chemical Society* **1987**, *109*, 677-682.
10. Sigfridsson, E.; Olsson, M.H.M.; Ryde, U. Inner-Sphere Reorganization Energy of Iron-Sulfur Clusters Studied with Theoretical Methods. *Inorganic Chemistry* **2001**, *40*, 2509-2519.
11. Dementin, S.; Belle, V.; Bertrand, P.; Guigliarelli, B.; Adryanczyk-Perrier, G.; De Lacey, A.L.; Fernandez, V.M.; Rousset, M.; Leger, C. Changing the Ligation of the Distal [4Fe4S] Cluster in Nife Hydrogenase Impairs Inter- and Intramolecular Electron Transfers. *J. Am. Chem. Soc.* **2006**, *128*, 5209-5218.
12. Bader, J.S.; Cortis, C.M.; Berne, B.J. Solvation and Reorganization Energies in Polarizable Molecular and Continuum Solvents. *Journal of Chemical Physics* **1997**, *106*, 2372-2387.
13. Tan, M.L.; Dolan, E.A.; Ichiye, T. Understanding Intramolecular Electron Transfer in Ferredoxin: A Molecular Dynamics Study. *Journal of Physical Chemistry B* **2004**, *108*, 20435-20441.

14. Petrenko, A.; Stein, M. Rates and Routes of Electron Transfer of Nife -Hydrogenase in an Enzymatic Fuel Cell. *Journal of Physical Chemistry B* **2015**, *119*, 13870-13882.
15. Cracknell, J.A.; Vincent, K.A.; Armstrong, F.A. Enzymes as Working or Inspirational Electrocatalysts for Fuel Cells and Electrolysis. *Chemical Reviews* **2008**, *108*, 2439-2461.
16. Pershad, H.R.; Duff, J.L.C.; Heering, H.A.; Duin, E.C.; Albracht, S.P.J.; Armstrong, F.A. Catalytic Electron Transport in Chromatium Vinosum [Nife]-Hydrogenase: Application of Voltammetry in Detecting Redox-Active Centers and Establishing That Hydrogen Oxidation Is Very Fast Even at Potentials Close to the Reversible H⁺/H₂ Value. *Biochemistry* **1999**, *38*, 8992-8999.
17. Dementin, S.; Burlat, B.; Fourmond, V.; Leroux, F.; Liebgott, P.-P.; Abou Hamdan, A.; Leger, C.; Rousset, M.; Guigliarelli, B.; Bertrand, P. Rates of Intra- and Intermolecular Electron Transfers in Hydrogenase Deduced from Steady-State Activity Measurements. *J. Am. Chem. Soc.* **2011**, *133*, 10211-10221.
18. Dementin, S.; Belle, V.; Bertrand, P.; Guigliarelli, B.; Adryanczyk-Perrier, G.; De Lacey, A.L.; Fernandez, V.M.; Rousset, M.; Leger, C. Changing the Ligation of the Distal [4Fe4s] Cluster in Nife Hydrogenase Impairs Inter- and Intramolecular Electron Transfers. *J. Am. Chem. Soc.* **2006**, *128*, 5209-5218.
19. Raleiras, P.; Kellers, P.; Lindblad, P.; Styring, S.; Magnuson, A. Isolation and Characterization of the Small Subunit of the Uptake Hydrogenase from the Cyanobacterium Nostoc Punctiforme. *Journal of Biological Chemistry* **2013**, *288*, 18345-18352.
20. Schröder, O.; Bleijlevens, B.; de Jongh, T.E.; Chen, Z.; Li, T.; Fischer, J.; Förster, J.; Friedrich, C.G.; Bagley, K.A.; Albracht, S.P.J., *et al.* Characterization of a Cyanobacterial-Like Uptake [Nife] hydrogenase: Epr and Ftir Spectroscopic Studies of the Enzyme from Acidithiobacillus Ferrooxidans. *JBIC Journal of Biological Inorganic Chemistry* **2007**, *12*, 212-233.
21. Raleiras, P.; Khanna, N.; Miranda, H.; Meszaros, L.S.; Krassen, H.; Ho, F.; Battchikova, N.; Aro, E.-M.; Magnuson, A.; Lindblad, P., *et al.* Turning around the Electron Flow in an Uptake Hydrogenase. Epr Spectroscopy and in Vivo Activity of a Designed Mutant in Hupsl from Nostoc Punctiforme. *Energy & Environmental Science* **2016**, *9*, 581-594.
22. TURBOMOLE. Program Package for Ab Initio Electronic Structure Calculations; Turbomole Version 6.6,.
23. Furche, F.; Ahlrichs, R.; Hättig, C.; Klopper, W.; Sierka, M.; Weigend, F. Turbomole. *Wiley Interdisciplinary Reviews: Computational Molecular Science* **2014**, *4*, 91-100.
24. Becke, A.D. Density-Functional Exchange-Energy Approximation with Correct Asymptotic Behavior. *Physical Review A* **1988**, *38*, 3098-3100.
25. Lee, C.; Yang, W.; Parr, R.G. Development of the Colle-Salvetti Correlation-Energy Formula into a Functional of the Electron Density. *Physical Review B* **1988**, *37*, 785-789.
26. Stephens, P.; Devlin, F.; Chabalowski, C.; Frisch, M.J. Ab Initio Calculation of Vibrational Absorption and Circular Dichroism Spectra Using Density Functional Force Fields. *The Journal of Physical Chemistry* **1994**, *98*, 11623-11627.

27. Schäfer, A.; Huber, C.; Ahlrichs, R. Fully Optimized Contracted Gaussian Basis Sets of Triple Zeta Valence Quality for Atoms Li to Kr. *The Journal of Chemical Physics* **1994**, *100*, 5829-5835.
28. Stein, M.; Kaur-Ghumaan, S. Microbial Hydrogen Splitting in the Presence of Oxygen. *Biochemical Society Transactions* **2013**, *41*, 1317-1324.
29. Cammack, R.; Patil, D.S.; Hatchikian, E.C.; Fernández, V.M. Nickel and Iron-Sulphur Centres in Desulfovibrio Gigas Hydrogenase: ESR Spectra, Redox Properties and Interactions. *Biochimica et Biophysica Acta (BBA) - Protein Structure and Molecular Enzymology* **1987**, *912*, 98-109.
30. Casado-Pascual, J.; Morillo, M.; Goychuk, I.; Hänggi, P. The Role of Different Reorganization Energies within the Zusman Theory of Electron Transfer. *The Journal of Chemical Physics* **2003**, *118*, 291-303.
31. Klamt, A.; Schüürmann, G. Cosmo: A New Approach to Dielectric Screening in Solvents with Explicit Expressions for the Screening Energy and Its Gradient. *Journal of the Chemical Society - Perkin Transactions 2* **1993**, 799-805.



© 2017 by the authors; licensee Preprints, Basel, Switzerland. This article is an open access article distributed under the terms and conditions of the Creative Commons by Attribution (CC-BY) license (<http://creativecommons.org/licenses/by/4.0/>).